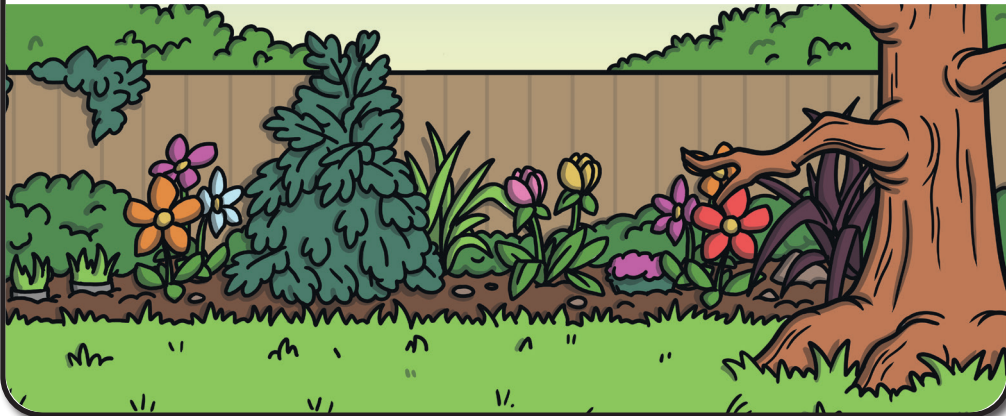


Super Seeds

9 Most plants begin their lives as seeds. Even giant
18 trees grow from tiny seeds. This leaves lots of
23 people wanting to know how!

33 Inside each seed is a mini plant. It is protected
44 by a hard shell called a seed coat. There is food
54 inside the seed coat for the plant to use. This
64 mini plant can become a fully grown plant if it
74 has all the things that it needs. It waits until
83 it has the right levels of water, oxygen, light
93 and heat. When it does, the mini seed begins to
99 grow quickly. This is called germination.



Questions



1. What is the hard shell of a seed called?



2. Which word does the author use to describe trees in the second sentence? Tick one.

☐

even

☐

they

☐

giant

☐

seeds



3. **Most plants begin their lives as seeds.**

What does this sentence tell you about some plants?

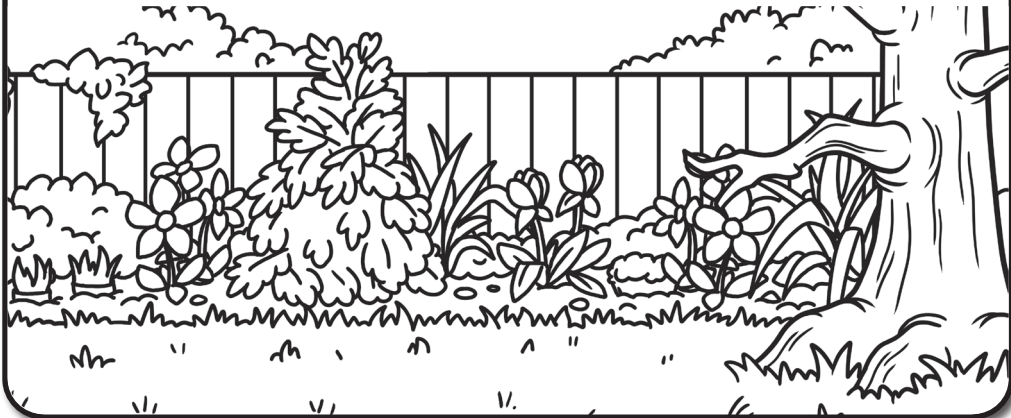


4. Predict what would happen to the mini plant inside the seed if it did not get the things that it needs.

Super Seeds

9 Most plants begin their lives as seeds. Even giant
18 trees grow from tiny seeds. This leaves lots of
23 people wanting to know how!

33 Inside each seed is a mini plant. It is protected
44 by a hard shell called a seed coat. There is food
54 inside the seed coat for the plant to use. This
64 mini plant can become a fully grown plant if it
74 has all the things that it needs. It waits until
83 it has the right levels of water, oxygen, light
93 and heat. When it does, the mini seed begins to
99 grow quickly. This is called germination.



Answers



1. What is the hard shell of a seed called?
Accept: coat; seed coat.



2. Which word does the author use to describe trees in the second sentence? Tick **one**.

- ☐ even
☐ they
☒ **giant**
☐ seeds



3. **Most plants begin their lives as seeds.**

What does this sentence tell you about some plants?

Pupils' own responses, such as: This sentence tells us that most plants begin their lives as seeds but some do not.



4. Predict what would happen to the mini plant inside the seed if it did not get the things that it needs.

Pupils' own responses, such as: I predict that the seed would not start to grow.